

This floorplan is only for illustrative purposes and is not to scale. Measurements of rooms, doors, windows, and any items are approximate and no responsibility is taken for any error, omission or mis-statement. Icons of items such as bathroom suites are representations only and may not look like the real items. Made with Made Snappy 360.

View: By appointment with the Agents.

Services: We have not checked or tested any of the Services or Appliances.

Tenure: We are advised: Freehold

Tax: Band: B

JDE/01/23/TakeOnOk01/23CPS

FACEBOOK & TWITTER: Be sure to follow us on Twitter: @WWProps
https://www.facebook.com/westwalesproperties/

WE WOULD LIKE TO POINT OUT THAT OUR PHOTOGRAPHS ARE TAKEN WITH A DIGITAL CAMERA WITH A WIDE ANGLE LENS. These particulars have been prepared in all good faith to give a fair overall view of the property. If there is any point which is of specific importance to you, please check with us first, particularly if travelling some distance to view the property. We would like to point out that the following items are excluded from the sale of the property: Fitted carpets, curtains and blinds, curtain rods and poles, light fittings, sheds, greenhouses - unless specifically specified in the sales particulars. Nothing in these particulars shall be deemed to be a statement that the property is in good structural condition or otherwise. Services, appliances and equipment referred to in the sales details have not been tested, and no warranty can therefore be given. Purchasers should satisfy themselves on such matters prior to purchase. Any areas, measurements or distances are given as a guide only and are not precise. Room sizes should not be relied upon for carpets and furnishings.

COMPUTER-LINKED OFFICES THROUGHOUT WEST WALES and Associated office in Mayfair, London

89 Charles Street, Milford Haven, Pembrokeshire, SA73 2HA

EMAIL: milford@westwalesproperties.co.uk

TELEPHONE: 01646 698585

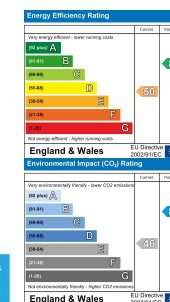


13 Vicary Street, Milford Haven, Pembrokeshire, SA73 2QJ

- End Terraced House
- Fully Modernised
- Two Double Bedrooms
- Double Glazing
- Close to Amenties
- Immaculately Presented
- Open Plan Living/Dining Room
- Gas Central Heating
- Edge of Town
- EPC Rating: E

Offers In The Region Of £140,000

COMPUTER-LINKED OFFICES THROUGHOUT WEST WALES and Associated office in Mayfair, London



89 Charles Street, Milford Haven, Pembrokeshire, SA73 2HA
EMAIL: milford@westwalesproperties.co.uk TELEPHONE: 01646 698585

The Agent that goes the Extra Mile



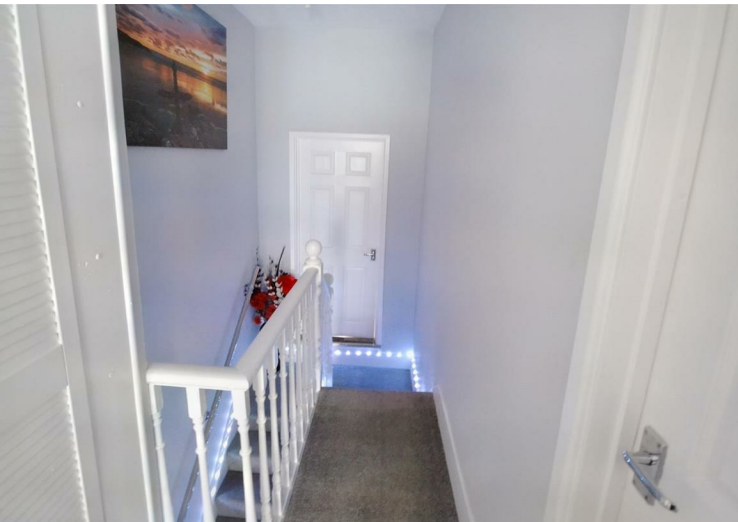


13 Vicary Street, is a beautifully presented end of terrace property. The property has been fully modernised including new UPVC double glazing and lighting system, it has also had a new boiler and radiators installed. It boasts two double bedrooms and spacious family bathroom on the first floor, whilst the ground floor offers a vestibule, hall, open plan living/dining area, a fully modernised kitchen with fitted worktops, units and appliances, it also benefits from a utility and downstairs w.c.

Externally the property offers a well thought out courtyard garden with a decked seating area and access to an outbuilding. Viewing is highly recommended to appreciate this immaculate presented property.



Milford Haven has the largest port in Wales and the third-largest port in the United Kingdom. It also has a popular Marina with accompanying Restaurant, Wine Bar, and boutique shops. The town itself has a historic late 18th and 19th centuries core based on a grid pattern, located between Hubberston Pill and Castle Pill and extending inland for 500 metres. Milford Haven's 20th-century expansion took in several other settlements. Hakin and Hubberston are older and situated to the west of the main town. The town also benefits from a variety of shops and supermarkets, leisure centre, primary and secondary schools, and the Torch Theatre and Cinema.



DIRECTIONS

DIRECTIONS: From our Milford Haven branch, continue down the hill and turn left on to Hamilton Terrace, at the monument turn left on to The Rath and continue around to Murray Road. Turn right on to Vicary Street and the property will be found on the left hand side denoted by our 'For Sale' board.

See our website www.westwalesproperties.co.uk in our TV channel to view our location videos about the area.